

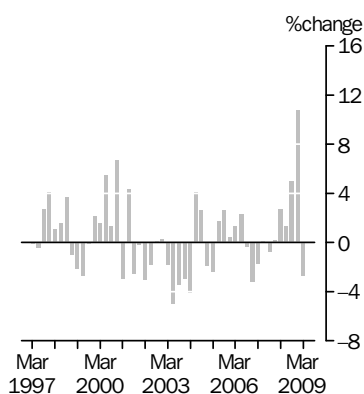
# INTERNATIONAL TRADE PRICE INDEXES

AUSTRALIA

EMBARGO: 11.30AM (CANBERRA TIME) FRI 17 APR 2009

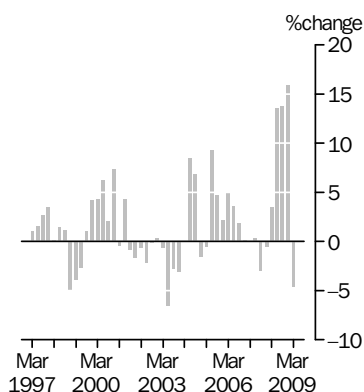
## IMPORT PRICE INDEX: all groups

Quarterly % change



## EXPORT PRICE INDEX: all groups

Quarterly % change



## KEY FIGURES

	Dec Qtr 08 to Mar Qtr 09 % change	Mar Qtr 08 to Mar Qtr 09 % change
<b>Import Price Index all groups</b>	<b>-2.8</b>	<b>14.6</b>
Food and live animals	-4.4	17.6
Beverages and tobacco	6.4	10.4
Crude materials, inedible, except fuels	-21.3	25.5
Mineral fuels, lubricants and related materials	-32.5	-34.4
Animal and vegetable oils, fats and waxes	1.8	26.3
Chemicals and related products, n.e.c.	-8.9	19.2
Manufactured goods classified chiefly by material	2.0	26.2
Machinery and transport equipment	3.8	20.6
Miscellaneous manufactured articles	5.1	34.6
Commodities and transactions, n.e.c.	15.7	34.4
<b>Export Price Index all groups</b>	<b>-4.6</b>	<b>42.8</b>
Food and live animals	-10.2	16.1
Beverages and tobacco	1.8	1.2
Crude materials, inedible, except fuels	-9.7	33.2
Mineral fuels, lubricants and related materials	0.4	142.7
Chemicals and related products, n.e.c.	-2.0	18.1
Manufactured goods classified chiefly by material	-22.9	-24.7
Machinery and transport equipment	0.7	20.8
Miscellaneous manufactured articles	-0.9	16.3

## KEY POINTS

### IMPORT PRICE INDEX

- The Import Price Index decreased by 2.8% in the March quarter 2009. The decrease was driven mainly by falls in prices paid for petroleum, petroleum products and related materials (-32.5%) and fertilisers (-55.5%). These falls were partly offset by rises in prices paid for gold, non-monetary (+15.7%) and road vehicles (+4.7%). Through the year to March quarter 2009, the Import Price Index increased by 14.6%.

### EXPORT PRICE INDEX

- The Export Price Index decreased by 4.6% in the March quarter 2009. The decrease was driven mainly by falls in prices received for metalliferous ores and metal scrap (-12.0%), non-ferrous metals (-27.5%) and petroleum, petroleum products and related materials (-22.7%). These falls were partly offset by rises in prices received for coal, coke and briquettes (+5.2%) and gold, non-monetary (+15.7%). Through the year to March quarter 2009, the Export Price Index increased by 42.8%.

## INQUIRIES

For further information about these and related statistics, contact the National Information and Referral Service on 1300 135 070 or Lee Taylor on Canberra (02) 6252 6251.

# NOTES

## FORTHCOMING ISSUES

<i>ISSUE (Quarter)</i>	<i>RELEASE DATE</i>
June 2009	17 July 2009
September 2009	23 October 2009
December 2009	22 January 2010
March 2010	23 April 2010

.....

## FORTHCOMING CHANGES

As foreshadowed in the December quarter 2008 issue, the content and format of tables 14, 15, 17 and 19 (available on the ABS website) will change from September quarter 2009 to reflect the contemporary industrial classification (ANZSIC 2006).

## CHANGES IN THIS ISSUE

This issue includes an Appendix at page 19 outlining the ANZSIC 2006 changes. A correspondence between the old (ANZSIC 1993) and new (ANZSIC 2006) classifications is available via the 'Downloads' tab associated with this publication on the ABS website <<http://www.abs.gov.au>>.

## ROUNDING

Any discrepancies between totals and sums of components are due to rounding.

## DATA REFERENCES

Data referenced in the Key points are available from the tables shown in this publication, or in the corresponding tables of this publication on the ABS website <<http://www.abs.gov.au>>.

.....

## ABBREVIATIONS

ABS	Australian Bureau of Statistics
ADP	automatic data processing
AHECC	Australian Harmonised Export Commodity Classification
ANZSIC	Australian and New Zealand Standard Industrial Classification
BEC	Classification by Broad Economic Categories
f.o.b.	free on board
HTISC	Harmonized Tariff Item Statistical Classification
n.e.c.	not elsewhere classified
SITC	Standard International Trade Classification

Brian Pink  
Australian Statistician

## LIST OF TABLES

page

### INTERNATIONAL TRADE PRICE INDEXES

<b>1</b>	Import price index: All groups, index numbers and percentage changes . . . . .	4
<b>2</b>	Import price index: SITC contribution to all groups index . . . . .	5
<b>3</b>	Import price index: Selected SITC sections . . . . .	6
<b>4</b>	Import price index: Consumption goods, balance of payments broad economic categories . . . . .	7
<b>5</b>	Import price index: Capital goods, balance of payments broad economic categories . . . . .	8
<b>6</b>	Import price index: Intermediate and other merchandise goods, balance of payments broad economic categories . . . . .	9
<b>7</b>	Export price index: All groups, index numbers and percentage changes . . . . .	11
<b>8</b>	Export price index: SITC contribution to all groups index . . . . .	12
<b>9</b>	Export price index: Selected SITC sections . . . . .	13
<b>10</b>	Export price index: Rural goods, balance of payments classification of exports . . . . .	14
<b>11</b>	Export price index: Non-rural goods, balance of payments classification of exports . . . . .	15

### ADDITIONAL TABLES AVAILABLE ON ABS WEBSITE

<b>12</b>	Import price index, by selected SITC division	
<b>13</b>	Import price index, by selected HTISC section	
<b>14</b>	Import price index, by selected ANZSIC industry of origin division	
<b>15</b>	Import price index, by selected ANZSIC industry of origin subdivision	
<b>16</b>	Import price index, by BEC category	
<b>17</b>	Export price index, AHECC and ANZSIC contribution to all groups index	
<b>18</b>	Export price index, by selected AHECC section	
<b>19</b>	Export price index, by selected ANZSIC industry of origin division and subdivision	

**IMPORT PRICE INDEX(a): All groups, index numbers and percentage changes**

<i>Period</i>	<i>Index numbers</i>	<i>% change from previous period</i>	<i>% change from corresponding quarter of previous year</i>
<b>2004-05</b>	112.8	0.4	..
<b>2005-06</b>	117.0	3.7	..
<b>2006-07</b>	115.7	-1.1	..
<b>2007-08</b>	115.0	-0.6	..
<b>2004</b>			
June	112.4	4.1	-6.4
September	115.3	2.6	-0.6
December	113.1	-1.9	0.4
<b>2005</b>			
March	110.4	-2.4	2.2
June	112.3	1.7	-0.1
September	115.2	2.6	-0.1
December	115.7	0.4	2.3
<b>2006</b>			
March	117.2	1.3	6.2
June	119.9	2.3	6.8
September	119.5	-0.3	3.7
December	115.7	-3.2	0.0
<b>2007</b>			
March	113.7	-1.7	-3.0
June	113.8	0.1	-5.1
September	112.9	-0.8	-5.5
December	113.1	0.2	-2.2
<b>2008</b>			
March	116.2	2.7	2.2
June	117.8	1.4	3.5
September	123.7	5.0	9.6
December	137.0	10.8	21.1
<b>2009</b>			
March	133.2	-2.8	14.6

.. not applicable

(a) Reference base of each index: 1989-90 = 100.0.

## IMPORT PRICE INDEX(a): SITC contribution to all groups index

Category	CONTRIBUTION TO ALL GROUPS (INDEX POINTS)		CHANGE IN POINTS CONTRIBUTION
	Dec Qtr 2008	Mar Qtr 2009	Dec Qtr 2008 to Mar Qtr 2009
	ALL GROUPS		
All groups	137.0	133.2	-3.8
SITC SECTIONS			
0 Food and live animals	5.44	5.20	-0.24
1 Beverages and tobacco	0.92	0.97	0.05
2 Crude materials, inedible, except fuels	2.29	1.80	-0.49
3 Mineral fuels, lubricants and related materials	17.98	12.15	-5.83
4 Animal and vegetable oils, fats and waxes	0.40	0.41	0.01
5 Chemicals and related products, n.e.c.	16.48	15.01	-1.47
6 Manufactured goods classified chiefly by material	15.57	15.88	0.31
7 Machinery and transport equipment	54.82	56.98	2.16
8 Miscellaneous manufactured articles	17.63	18.54	0.91
9 Commodities and transactions, n.e.c.	5.43	6.28	0.85
SELECTED SITC DIVISIONS			
03 Fish, crustaceans, molluscs and aquatic invertebrates and preparations thereof	0.82	0.82	0.00
24 Cork and wood	0.47	0.48	0.01
33 Petroleum, petroleum products and related materials	17.29	11.68	-5.61
51 Organic chemicals	2.61	2.57	-0.04
52 Inorganic chemicals	1.26	1.21	-0.05
59 Chemical materials and products, n.e.c.	1.45	1.50	0.05
64 Paper, paperboard and articles of paper pulp, of paper or of paperboard	1.69	1.78	0.09
65 Textile yarn, fabrics, made-up articles, n.e.c., and related products	1.83	1.85	0.02
69 Manufactures of metals, n.e.c.	3.76	3.94	0.18
71 Power generating machinery and equipment	2.98	3.14	0.16
72 Machinery specialised for particular industries	5.77	6.08	0.31
74 General industrial machinery and equipment, n.e.c. and machine parts, n.e.c.	6.93	7.36	0.43
75 Office machines and ADP machines	6.14	6.29	0.15
76 Telecommunications and sound recording and reproducing apparatus and equipment	7.05	7.01	-0.04
77 Electrical machinery, apparatus and appliances, n.e.c., and electrical parts thereof	6.06	6.18	0.12
78 Road vehicles (incl. air-cushion vehicles)	16.22	16.99	0.77
79 Transport equipment (excl. road vehicles)	3.15	3.38	0.23
87 Professional, scientific and controlling instruments and apparatus, n.e.c.	3.23	3.41	0.18
89 Miscellaneous manufactured articles, n.e.c.	6.19	6.31	0.12

(a) Reference base of each index 1989-90 = 100.0.

## IMPORT PRICE INDEX(a): Selected SITC sections

<i>Period</i>	<i>Food and live animals (0)</i>	<i>Beverages and tobacco (1)</i>	<i>Crude materials, inedible, except fuels (2)</i>	<i>Mineral fuels, lubricants and related materials (3)</i>	<i>Animal and vegetable oils, fats and waxes (4)</i>	<i>Chemicals and related products, n.e.c. (5)</i>	<i>Manufactured goods classified chiefly by material (6)</i>	<i>Machinery and transport equipment (7)</i>	<i>Miscellaneous manufactured articles (8)</i>	<i>Commodities and transactions, n.e.c. (9)</i>
<b>2004-05</b>	120.0	128.2	115.1	202.3	142.2	116.8	123.2	98.3	111.8	113.3
<b>2005-06</b>	125.9	132.5	121.4	288.0	160.9	117.9	126.7	95.4	112.3	142.3
<b>2006-07</b>	123.8	122.3	125.6	280.2	167.0	118.8	135.1	92.4	109.3	163.7
<b>2007-08</b>	126.2	122.8	138.8	353.7	197.8	120.7	130.0	85.2	101.1	185.1
<b>2004</b>										
June	116.8	132.8	111.6	171.0	134.1	115.1	120.0	101.6	112.9	111.1
September	119.5	131.1	117.2	192.2	148.3	117.4	124.5	102.6	115.1	114.2
December	119.4	128.0	114.4	200.1	143.6	116.6	123.2	99.1	112.0	115.8
<b>2005</b>										
March	117.7	124.4	112.6	188.2	135.5	115.7	122.4	96.2	110.1	110.8
June	123.2	129.4	116.1	228.7	141.4	117.5	122.5	95.2	109.8	112.2
September	124.9	133.3	118.4	268.9	141.1	118.2	123.1	95.5	110.8	116.8
December	125.6	133.9	120.6	270.1	156.7	118.3	124.8	95.5	111.7	132.0
<b>2006</b>										
March	126.3	132.8	122.2	289.2	164.2	117.3	127.0	95.3	113.4	151.2
June	126.8	129.8	124.4	323.7	181.7	117.9	132.0	95.2	113.2	169.3
September	125.3	120.6	127.6	320.5	174.5	118.7	136.1	94.4	111.5	164.6
December	124.5	124.8	127.2	266.5	165.7	118.0	136.5	93.2	110.9	161.2
<b>2007</b>										
March	124.7	123.9	123.2	250.8	164.8	117.2	134.9	92.0	109.2	167.0
June	120.6	120.0	124.5	282.9	162.9	121.4	132.7	89.8	105.7	161.9
September	124.6	121.8	131.4	290.6	176.1	120.6	132.0	87.5	104.0	162.2
December	122.0	122.5	131.3	330.9	178.0	119.1	129.0	85.3	100.6	178.6
<b>2008</b>										
March	128.8	123.7	139.9	367.4	209.6	120.4	129.4	85.1	101.3	207.0
June	129.3	123.3	152.6	425.9	227.6	122.8	129.5	82.7	98.6	192.4
September	131.9	126.8	171.3	477.3	228.3	134.7	135.8	83.6	102.0	198.3
December	158.4	128.4	223.0	356.8	260.0	157.5	160.1	98.8	129.7	240.5
<b>2009</b>										
March	151.5	136.6	175.6	241.0	264.8	143.5	163.3	102.6	136.3	278.2

(a) Reference base of each index: 1989-90 = 100.0.

## BALANCE OF PAYMENTS BROAD ECONOMIC CATEGORIES - CONSUMPTION GOODS

	<b>Consumption goods total</b>	<i>Food and beverages, mainly for consumption</i>	<i>Household electrical items</i>	<i>Non-industrial transport equipment</i>	<i>Textiles, clothing and footwear</i>	<i>Toys, books and leisure goods</i>	<i>Consumption goods n.e.c.</i>
<b>2004-05</b>	<b>119.4</b>	128.1	85.7	152.2	103.8	118.7	115.4
<b>2005-06</b>	<b>119.0</b>	134.9	82.3	148.0	104.1	119.3	113.6
<b>2006-07</b>	<b>116.5</b>	130.3	75.3	146.0	102.7	114.2	113.0
<b>2007-08</b>	<b>112.6</b>	131.5	65.9	143.8	96.1	103.8	110.0
<b>2004</b>							
June	<b>120.9</b>	125.9	90.9	154.9	105.2	118.8	116.8
September	<b>122.2</b>	128.2	89.7	154.0	108.4	121.4	118.2
December	<b>119.9</b>	127.2	85.9	153.8	104.8	118.9	116.1
<b>2005</b>							
March	<b>117.6</b>	125.5	84.6	151.3	101.0	117.3	113.9
June	<b>117.8</b>	131.3	82.7	149.5	100.8	117.2	113.4
September	<b>119.0</b>	133.2	84.4	149.4	101.9	118.0	114.7
December	<b>118.7</b>	134.7	83.3	147.7	103.7	119.4	112.6
<b>2006</b>							
March	<b>119.0</b>	135.6	81.5	147.0	105.6	119.6	113.2
June	<b>119.2</b>	136.0	79.9	148.0	105.3	120.3	113.7
September	<b>118.1</b>	132.3	77.7	147.0	106.3	116.9	113.3
December	<b>116.9</b>	131.1	75.5	145.4	104.3	115.2	113.2
<b>2007</b>							
March	<b>116.3</b>	130.9	75.1	146.0	101.6	114.6	112.6
June	<b>114.5</b>	126.7	72.7	145.4	98.5	110.0	113.0
September	<b>113.4</b>	130.2	69.9	142.7	98.5	107.7	112.5
December	<b>112.0</b>	127.8	66.7	142.5	96.4	103.8	110.4
<b>2008</b>							
March	<b>113.1</b>	134.0	64.9	145.6	96.6	104.4	109.0
June	<b>111.8</b>	133.9	62.2	144.4	93.0	99.4	108.2
September	<b>114.1</b>	136.5	65.6	143.9	97.8	103.5	110.2
December	<b>131.4</b>	159.4	74.6	150.1	126.5	132.6	127.5
<b>2009</b>							
March	<b>134.8</b>	155.6	76.3	155.9	134.4	137.4	130.1

(a) Reference base of each index: 1989-90 = 100.0

## IMPORT PRICE INDEX(a): Capital goods

## BALANCE OF PAYMENTS BROAD ECONOMIC CATEGORIES - CAPITAL GOODS

<i>Period</i>	<b>Capital goods total</b>	<i>Machinery and industrial equipment</i>	<i>ADP equipment</i>	<i>Telecommunications equipment</i>	<i>Civil aircraft</i>	<i>Industrial transport equipment n.e.c.</i>	<i>Capital goods, n.e.c.</i>
<b>2004-05</b>	<b>97.3</b>	130.1	22.4	43.7	137.0	163.5	124.4
<b>2005-06</b>	<b>93.9</b>	129.3	19.9	38.9	145.0	159.1	121.2
<b>2006-07</b>	<b>90.0</b>	129.2	16.9	35.3	146.0	156.1	115.4
<b>2007-08</b>	<b>83.0</b>	123.8	13.3	30.1	132.2	152.4	108.4
<b>2004</b>							
June	<b>100.5</b>	131.5	24.4	49.6	135.9	164.3	127.2
September	<b>101.4</b>	133.7	24.7	48.4	140.0	167.6	128.4
December	<b>98.2</b>	129.9	22.8	46.1	137.3	164.5	123.8
<b>2005</b>							
March	<b>95.3</b>	128.6	21.4	40.4	133.5	162.8	123.5
June	<b>94.2</b>	128.2	20.6	39.8	137.2	158.9	121.9
September	<b>94.2</b>	127.3	20.7	39.5	140.0	160.0	121.9
December	<b>94.4</b>	128.7	20.3	39.8	144.6	161.1	122.4
<b>2006</b>							
March	<b>93.5</b>	129.6	19.6	38.2	147.0	158.1	120.9
June	<b>93.4</b>	131.6	18.8	38.2	148.4	157.2	119.5
September	<b>92.1</b>	129.9	18.3	36.5	149.2	159.0	117.8
December	<b>91.1</b>	130.2	17.4	36.0	148.3	156.5	117.8
<b>2007</b>							
March	<b>89.5</b>	128.7	16.6	35.0	146.2	154.8	114.3
June	<b>87.4</b>	127.9	15.4	33.5	140.4	154.2	111.7
September	<b>85.3</b>	125.4	14.6	31.5	137.0	153.6	111.4
December	<b>83.3</b>	124.8	13.4	29.9	131.8	154.2	107.8
<b>2008</b>							
March	<b>82.7</b>	123.1	13.0	30.2	132.4	153.3	107.7
June	<b>80.6</b>	121.8	12.0	28.7	127.6	148.5	106.8
September	<b>81.2</b>	124.6	12.0	28.6	132.1	150.5	101.9
December	<b>100.0</b>	154.5	15.4	35.0	177.5	168.4	128.3
<b>2009</b>							
March	<b>104.1</b>	162.8	15.6	34.8	190.6	177.9	134.9

(a) Reference base of each index: 1989-90 = 100.0.



## IMPORT PRICE INDEX(a): Intermediate and other merchandise goods

## BALANCE OF PAYMENTS BROAD ECONOMIC CATEGORIES - INTERMEDIATE AND OTHER MERCHANDISE GOODS

<i>Period</i>	<b>Intermediate and other merchandise goods total</b>	<i>Intermediate and other goods total excluding non- monetary gold</i>	<i>Food and beverages, mainly for industry</i>	<i>Primary industrial supplies, n.e.c.</i>	<i>Fuels and lubricants</i>	<i>Parts for transport equipment</i>	<i>Parts for ADP machinery</i>	<i>Other parts for capital equipment</i>	<i>Organic and inorganic chemicals</i>
<b>2004-05</b>	<b>114.8</b>	115.1	117.5	116.4	238.3	127.6	17.9	89.2	110.6
<b>2005-06</b>	<b>127.9</b>	127.9	121.3	122.0	341.4	129.2	15.8	87.4	113.9
<b>2006-07</b>	<b>129.2</b>	129.2	130.1	125.6	331.8	132.1	13.5	86.5	115.1
<b>2007-08</b>	<b>136.2</b>	135.6	162.1	143.1	420.2	123.7	10.6	80.1	122.8
<b>2004</b>									
June	<b>110.3</b>	110.6	114.4	112.6	200.6	128.2	19.5	91.9	106.8
September	<b>115.7</b>	116.0	120.4	118.5	225.8	133.1	19.7	93.3	109.1
December	<b>114.5</b>	114.8	117.7	119.6	235.7	127.9	18.2	89.9	108.6
<b>2005</b>									
March	<b>111.7</b>	112.0	112.7	113.3	221.4	124.7	17.1	87.1	110.4
June	<b>117.1</b>	117.4	119.1	114.3	270.2	124.5	16.4	86.5	114.3
September	<b>123.2</b>	123.5	119.1	118.4	318.5	126.2	16.5	86.8	113.0
December	<b>124.6</b>	124.8	119.6	121.5	319.6	127.6	16.2	87.2	114.9
<b>2006</b>									
March	<b>128.6</b>	128.5	121.6	122.4	343.0	131.1	15.6	87.7	113.3
June	<b>135.0</b>	134.8	124.7	125.5	384.5	131.9	15.0	87.9	114.5
September	<b>135.6</b>	135.6	124.8	130.1	380.5	133.4	14.6	88.2	115.3
December	<b>128.1</b>	128.0	128.6	129.8	315.1	133.0	13.9	87.3	112.6
<b>2007</b>									
March	<b>124.9</b>	124.8	133.4	121.7	296.3	132.8	13.2	86.4	112.1
June	<b>128.2</b>	128.2	133.7	120.9	335.3	129.1	12.2	84.2	120.3
September	<b>128.5</b>	128.1	145.1	130.4	344.7	126.0	11.6	82.6	120.6
December	<b>131.7</b>	131.2	148.4	133.4	393.7	122.1	10.7	80.1	119.3
<b>2008</b>									
March	<b>138.9</b>	137.5	169.8	144.1	435.6	124.8	10.4	79.6	124.9
June	<b>145.6</b>	145.6	185.2	164.3	506.8	121.7	9.5	77.9	126.3
September	<b>157.7</b>	158.3	191.6	188.9	563.4	124.8	9.6	79.3	153.5
December	<b>163.4</b>	161.9	229.0	250.3	413.5	148.2	12.5	95.7	173.0
<b>2009</b>									
March	<b>148.6</b>	143.7	210.0	188.0	279.8	154.6	12.8	99.4	169.3

(a) Reference base of each index: 1989-90 = 100.0.

BALANCE OF PAYMENTS BROAD ECONOMIC CATEGORIES -  
INTERMEDIATE AND OTHER MERCHANDISE GOODS *continued*

<i>Period</i>	<i>Paper and paperboard</i>	<i>Textile yarn and fabric</i>	<i>Iron and steel</i>	<i>Plastics</i>	<i>Processed industrial supplies, n.e.c.</i>	<i>Non- monetary gold</i>
<b>2004-05</b>	93.8	105.1	141.9	122.1	126.5	113.4
<b>2005-06</b>	94.0	105.9	143.4	128.8	134.2	142.5
<b>2006-07</b>	95.1	106.2	158.6	132.2	141.9	163.9
<b>2007-08</b>	91.4	102.1	159.6	125.2	136.6	185.2
<b>2004</b>						
June	97.0	105.0	124.5	116.2	123.0	111.3
September	96.0	108.4	140.3	120.7	127.4	114.3
December	93.9	105.8	138.6	121.2	126.1	115.9
<b>2005</b>						
March	92.7	103.5	143.5	121.9	124.9	110.9
June	92.7	102.8	145.3	124.6	127.5	112.3
September	93.9	103.4	143.4	126.3	128.6	116.9
December	94.6	106.4	143.6	127.1	131.7	132.2
<b>2006</b>						
March	93.6	106.9	140.7	131.1	135.4	151.4
June	93.9	107.0	145.7	130.6	141.2	169.5
September	94.4	107.1	152.5	134.2	143.7	164.8
December	95.5	107.4	158.1	134.6	143.7	161.4
<b>2007</b>						
March	96.5	105.0	164.3	130.2	140.5	167.2
June	94.1	105.2	159.6	129.9	139.6	162.0
September	92.6	102.8	165.6	128.1	136.2	162.3
December	92.7	101.3	158.5	123.3	132.8	178.8
<b>2008</b>						
March	90.3	102.4	155.5	124.3	137.6	207.2
June	89.9	101.8	158.7	124.9	139.9	192.6
September	93.3	106.7	178.0	135.9	150.9	198.5
December	97.4	132.3	227.6	180.5	182.1	240.7
<b>2009</b>						
March	102.6	131.9	226.5	173.2	166.5	278.5

(a) Reference base of each index: 1989-90 = 100.0.

## EXPORT PRICE INDEX (a): All groups, index numbers and percentage changes

<i>Period</i>	<i>Index numbers</i>	<i>% change from previous period</i>	<i>% change from corresponding quarter of previous year</i>
<b>2004-05</b>	116.4	13.6	..
<b>2005-06</b>	136.0	16.8	..
<b>2006-07</b>	146.8	7.9	..
<b>2007-08</b>	149.6	1.9	..
<b>2004</b>			
June	108.0	8.4	2.1
September	115.4	6.9	12.3
December	113.6	-1.6	14.1
<b>2005</b>			
March	113.0	-0.5	13.5
June	123.5	9.3	14.4
September	129.3	4.7	12.0
December	132.1	2.2	16.3
<b>2006</b>			
March	138.7	5.0	22.7
June	143.7	3.6	16.4
September	146.4	1.9	13.2
December	146.7	0.2	11.1
<b>2007</b>			
March	146.7	0.0	5.8
June	147.2	0.3	2.4
September	142.8	-3.0	-2.5
December	142.0	-0.6	-3.2
<b>2008</b>			
March	146.9	3.5	0.1
June	166.8	13.5	13.3
September	189.8	13.8	32.9
December	219.9	15.9	54.9
<b>2009</b>			
March	209.8	-4.6	42.8

.. not applicable

(a) Reference base of each index: 1989-90 = 100.0.

## EXPORT PRICE INDEX(a): SITC contribution to all groups index

Category	CONTRIBUTION TO ALL GROUPS (INDEX POINTS)		CHANGE IN POINTS CONTRIBUTION
	Dec Qtr 2008	Mar Qtr 2009	Dec Qtr 2008 to Mar Qtr 2009
ALL GROUPS			
All groups	219.9	209.8	-10.1
SELECTED SITC SECTIONS			
0 Food and live animals	23.38	20.98	-2.40
1 Beverages and tobacco	2.81	2.86	0.05
2 Crude materials, inedible, except fuels	55.29	49.94	-5.35
3 Mineral fuels, lubricants and related materials	73.47	73.78	0.31
5 Chemicals and related products, n.e.c.	8.21	8.04	-0.17
6 Manufactured goods classified chiefly by material	20.47	15.78	-4.69
7 Machinery and transport equipment	15.69	15.80	0.11
8 Miscellaneous manufactured articles	5.37	5.33	-0.04
SELECTED SITC DIVISIONS			
00 Live animals other than animals of division 03	1.09	1.00	-0.09
01 Meat and meat preparations	7.94	6.82	-1.12
02 Dairy products and birds' eggs	2.64	2.00	-0.64
03 Fish, crustaceans, molluscs and aquatic invertebrates and preparations thereof	1.43	1.39	-0.04
04 Cereals and cereal preparations	5.63	5.03	-0.60
05 Vegetables and fruit	1.30	1.27	-0.03
11 Beverages	2.68	2.72	0.04
21 Hides, skins and furskins, raw	0.49	0.39	-0.10
26 Textile fibres and their wastes	3.09	2.91	-0.18
28 Metalliferous ores and metal scrap	48.52	42.70	-5.82
32 Coal, coke and briquettes	55.22	58.10	2.88
33 Petroleum, petroleum products and related materials	6.94	5.37	-1.57
52 Inorganic chemicals	0.88	0.70	-0.18
54 Medicinal and pharmaceutical products	3.64	4.00	0.36
61 Leather, leather manufactures, n.e.c., and dressed furskins	0.35	0.31	-0.04
67 Iron and steel	3.10	2.43	-0.67
68 Non-ferrous metals	12.98	9.41	-3.57
71-75 Power generating, general industrial and other specialised machinery and equipment	6.35	6.41	0.06
76-77 Telecommunications equipment, sound recording apparatus and electrical machinery, n.e.c	3.03	3.00	-0.03
78 Road vehicles (incl. air-cushion vehicles)	4.63	4.60	-0.03
79 Transport equipment (excl. road vehicles)	1.68	1.78	0.10
89 Miscellaneous manufactured articles, n.e.c.	2.35	2.32	-0.03

(a) Reference base of each index: 1989-90 = 100.0.

## EXPORT PRICE INDEX(a): Selected SITC sections

<i>Period</i>	<i>Food and live animals (0)</i>	<i>Beverages and tobacco (1)</i>	<i>Crude materials, inedible, except fuels (2)</i>	<i>Mineral fuels, lubricants and related materials (3)</i>	<i>Chemicals and related products, n.e.c. (5)</i>	<i>Manufactured goods classified chiefly by material (6)</i>	<i>Machinery and transport equipment (7)</i>	<i>Miscellaneous manufactured articles (8)</i>
<b>2004-05</b>	106.8	126.4	103.1	184.9	108.3	121.1	88.4	89.2
<b>2005-06</b>	112.0	124.8	121.3	254.0	118.8	139.8	89.8	94.4
<b>2006-07</b>	117.3	119.0	147.3	229.5	125.5	187.0	88.7	94.7
<b>2007-08</b>	132.5	105.0	148.0	250.1	115.2	170.1	85.1	87.3
<b>2004</b>								
June	103.0	126.3	95.0	153.3	106.1	110.7	89.0	89.6
September	108.6	128.9	100.2	177.1	108.2	121.0	89.6	90.4
December	106.2	125.5	98.7	174.5	106.2	119.7	88.3	88.7
<b>2005</b>								
March	105.5	124.4	98.6	174.3	106.4	119.7	87.0	88.3
June	106.8	126.6	115.0	213.6	112.2	124.1	88.5	89.2
September	108.7	126.3	116.7	248.4	110.5	123.0	89.0	92.9
December	110.2	126.5	118.0	250.9	115.3	127.3	89.7	94.0
<b>2006</b>								
March	112.8	127.2	124.2	259.0	120.7	144.1	90.3	95.1
June	116.3	119.3	126.3	257.7	128.6	164.6	90.2	95.7
September	113.3	119.3	140.8	247.5	128.9	178.6	88.9	96.0
December	117.9	119.6	144.4	233.5	126.2	185.8	89.3	95.5
<b>2007</b>								
March	120.6	119.6	148.0	222.3	126.1	186.1	89.1	94.8
June	117.4	117.4	155.8	214.7	120.9	197.4	87.5	92.5
September	117.3	111.9	146.3	216.4	119.1	179.2	87.3	89.8
December	121.4	102.0	138.7	230.4	113.3	167.0	85.1	87.7
<b>2008</b>								
March	140.0	104.5	139.0	235.6	111.3	165.2	85.1	87.1
June	151.3	101.5	168.0	318.1	117.2	169.0	83.0	84.6
September	160.4	97.3	179.5	453.0	122.0	166.3	87.1	90.1
December	181.0	103.9	205.0	569.3	134.1	161.3	102.1	102.2
<b>2009</b>								
March	162.5	105.8	185.1	571.7	131.4	124.4	102.8	101.3

(a) Reference base of each index: 1989-90 = 100.0.

## BALANCE OF PAYMENTS CLASSIFICATION OF EXPORTS

<i>Period</i>	<i>Rural goods total</i>	<i>Meat and meat preparations</i>	<i>Cereal grains and cereal preparations</i>	<i>Wool and sheepskins</i>	<i>Other rural</i>
<b>2004-05</b>	<b>97.2</b>	137.2	87.4	70.8	117.4
<b>2005-06</b>	<b>97.5</b>	136.4	87.8	63.0	121.2
<b>2006-07</b>	<b>102.4</b>	134.2	100.2	72.1	124.5
<b>2007-08</b>	<b>118.2</b>	140.3	142.6	81.9	137.3
<b>2004</b>					
June	<b>95.8</b>	124.4	94.1	74.4	115.1
September	<b>100.3</b>	138.6	94.9	76.7	118.9
December	<b>96.8</b>	138.7	85.7	71.6	116.3
<b>2005</b>					
March	<b>95.3</b>	136.0	84.5	68.0	115.6
June	<b>96.2</b>	135.5	84.3	66.7	118.9
September	<b>97.4</b>	140.7	84.0	64.9	120.4
December	<b>97.1</b>	135.5	87.7	60.6	121.6
<b>2006</b>					
March	<b>97.2</b>	133.7	89.9	60.2	121.7
June	<b>98.1</b>	135.7	89.5	66.2	121.0
September	<b>96.3</b>	131.2	86.6	65.6	120.3
December	<b>101.0</b>	137.9	96.9	66.0	123.4
<b>2007</b>					
March	<b>106.2</b>	138.7	108.7	76.3	125.8
June	<b>105.9</b>	129.1	108.7	80.4	128.3
September	<b>106.7</b>	127.8	112.4	80.6	128.9
December	<b>110.1</b>	126.0	125.3	81.2	132.2
<b>2008</b>					
March	<b>124.4</b>	142.0	159.0	85.7	143.2
June	<b>131.5</b>	165.4	173.7	80.1	144.8
September	<b>137.4</b>	186.2	175.9	76.7	149.4
December	<b>149.1</b>	199.7	206.7	72.3	162.8
<b>2009</b>					
March	<b>133.5</b>	171.2	184.5	65.4	149.7

(a) Reference base of each index: 1989-90 = 100.0.

## BALANCE OF PAYMENTS CLASSIFICATION OF EXPORTS

<i>Period</i>	<i>Non-rural goods total (excl. non-monetary gold)</i>	<i>Metal ores and minerals</i>	<i>Coal, coke and briquettes</i>	<i>Other mineral fuels</i>	<i>Metals (excl. non-monetary gold)</i>	<i>Machinery</i>	<i>Transport equipment</i>	<i>Other manufactures</i>	<i>Other non-rural</i>	<i>Non-monetary gold</i>
<b>2004-05</b>	<b>126.8</b>	124.8	139.9	289.2	125.4	78.9	110.4	107.2	73.0	114.9
<b>2005-06</b>	<b>153.1</b>	158.1	208.2	352.4	148.7	80.2	111.7	109.5	83.2	144.6
<b>2006-07</b>	<b>165.6</b>	196.3	174.7	360.6	211.2	79.8	109.1	109.1	85.2	166.2
<b>2007-08</b>	<b>162.9</b>	188.7	166.5	466.0	189.4	77.7	102.6	105.2	74.9	187.8
<b>2004</b>										
June	<b>115.1</b>	111.9	110.7	254.0	112.4	78.5	112.8	106.0	68.9	112.8
September	<b>124.1</b>	118.0	127.1	295.8	124.5	79.3	113.2	108.7	72.7	115.9
December	<b>122.7</b>	117.4	128.2	283.2	123.9	78.8	110.2	107.1	71.9	117.5
<b>2005</b>										
March	<b>122.7</b>	120.0	133.2	269.1	124.7	78.1	108.1	105.1	71.5	112.5
June	<b>137.6</b>	143.8	171.2	308.6	128.3	79.4	110.0	107.8	75.8	113.8
September	<b>145.3</b>	145.4	205.2	339.7	127.1	79.5	111.1	109.2	77.0	118.6
December	<b>148.3</b>	150.5	211.7	329.5	132.5	79.6	112.5	110.6	79.6	133.9
<b>2006</b>										
March	<b>156.6</b>	165.1	213.2	356.5	154.4	80.4	112.7	108.5	85.0	153.5
June	<b>162.2</b>	171.5	202.8	383.7	180.8	81.3	110.6	109.8	91.0	172.2
September	<b>167.1</b>	191.1	189.2	386.2	199.2	79.7	109.8	111.1	88.8	167.2
December	<b>166.2</b>	194.8	178.5	364.2	210.2	80.1	110.3	109.1	86.6	163.7
<b>2007</b>										
March	<b>163.9</b>	196.3	171.0	343.7	210.2	80.1	109.6	108.6	84.4	169.6
June	<b>165.2</b>	203.1	160.1	348.2	225.0	79.3	106.5	107.6	81.1	164.4
September	<b>158.5</b>	189.9	155.6	368.0	201.3	79.3	106.0	106.2	75.6	164.6
December	<b>155.0</b>	175.8	146.1	451.2	185.6	77.3	103.4	105.8	71.6	181.3
<b>2008</b>										
March	<b>155.2</b>	173.6	143.3	479.8	182.5	77.7	102.3	105.0	74.2	210.0
June	<b>182.7</b>	215.6	220.9	565.0	188.2	76.3	98.8	103.8	78.2	195.3
September	<b>212.6</b>	232.2	374.9	590.9	184.2	80.8	102.0	108.0	80.7	200.9
December	<b>248.3</b>	268.9	511.7	598.9	172.8	91.9	125.5	119.8	93.6	243.7
<b>2009</b>										
March	<b>235.4</b>	242.1	538.4	514.6	127.3	92.2	127.1	115.3	95.6	282.3

(a) Reference base of each index: 1989-90 = 100.0.

## EXPLANATORY NOTES

### INTRODUCTION

**1** This publication contains indexes measuring changes in the prices paid for imports of merchandise that are landed in Australia each quarter and prices received for exports of merchandise that are shipped from Australia each quarter. The import price indexes are in tables 1–6 and the export price indexes are in tables 7–11.

**2** The indexes are calculated on the reference base 1989–90=100.0.

### SCOPE

**3** The import price index excludes the following items (representing less than 5% of the value of merchandise imported during the weighting period) because of the inherent difficulties in pricing the items to constant quality (see paragraph 15 below)

- live animals (not for food)
- jewellery and other articles of precious metal, n.e.c.
- military equipment
- commodities not classified according to kind
- works of art, collectors' pieces, antiques
- railway vehicles
- ships of various types.

**4** The export price index includes re-exports of merchandise (i.e. goods which are imported into Australia and exported at a later date without physical transformation).

### CLASSIFICATIONS

**5** Index numbers for selected sections of the Standard International Trade Classification (SITC) are provided in table 3 (import price index) and table 9 (export price index). The SITC (Revision 4) used from the September quarter 2008 onwards is the United Nations' updated version, replacing SITC (Revision 3). SITC (Revision 4) retains the overall structure of SITC (Revision 3) and consists of the same number of sections, divisions and groups. Changes to the classification labels and components were made at levels lower than those used in the Import and Export Prices Indexes. As a result, there has been no material impact on the indexes, which remain comparable across the changes in classification.

**6** The import price index is also presented by Balance of Payments Broad Economic Categories in tables 4–6, which have been disaggregated into balance of payments groupings of consumption goods, capital goods and intermediate and other merchandise goods. From the September quarter 2008 onwards, the previous heading of Classification of Broad Economic Categories (BEC) End Use, has been replaced with Balance of Payments Broad Economic Categories. This is simply a name change, with the series remaining comparable to previously published series.

**7** The export price index is also presented by balance of payments classification of exports groupings in tables 10 and 11.

### ITEMS AND WEIGHTS

**8** The import price index and export price index are annually reweighted chained Laspeyres indexes. This method of weighting was introduced in the September quarter 2000 and replaces the 'fixed-base' method of weighting in which the weighting patterns are updated infrequently (generally once every 5 or 10 years).

**9** The annual reweighting and chaining process involves a number of steps in order to provide new weights each year. The current weighting basis for the import price index was derived from the average value of import items during 2007–08. This differs slightly from the export price index which has used the average value of export items during 2006–07 and 2007–08, due to the greater volatility associated with the value of export items. These weights were revalued to reflect link period (June quarter 2008) price levels; this means, for example, that the weights for the import price index are effectively determined using quantities from 2007–08 and prices from June quarter 2008. Indexes derived by using the new weights for the September quarter 2008 were then linked to the already published June quarter 2008 (link period) levels which were derived using the previous series weights. Using this methodology, long-term chain linked series can



## EXPLANATORY NOTES *continued*

### ITEMS AND WEIGHTS *continued*

be constructed over time on a consistent reference base for continuity and user convenience, but using annually refreshed weights. The reference base for each index series continues to be 1989–90=100 even though the weights are being updated each year.

**10** The commodities directly represented in each index (the index items) were selected on the basis of the significance of their import and export values in the period 2007–08 for imports and 2006–07 and 2007–08 for exports. All significant commodities were selected for pricing. The weights for minor commodities which are not directly priced are included with those of comparable directly priced items whose prices are likely to move in a similar way.

### PRICE MEASUREMENT

**11** In general, prices of individual shipments are obtained from major importers and exporters of the selected items and relate to the quarter in which the imported goods physically arrive in Australia and the exported goods physically leave Australia.

**12** Imports are priced on a 'free on board' (f.o.b.), country of origin basis. Therefore freight and insurance charges involved in shipping goods from foreign to Australian ports are excluded from the prices used in the index, as are Australian import duties and taxes. Similarly, exports are priced on a f.o.b. basis at the main Australian ports of export. Exports are exempt from taxes on products.

**13** As the prices used in the indexes are expressed in Australian currency, changes in the relative value of the Australian dollar and overseas currencies can have a direct impact on price movements for the many commodities that are bought and sold in currencies other than Australian dollars. Prices reported in a foreign currency are converted to Australian dollars using relevant exchange rates. Where imports or exports are transacted in prices expressed in terms of a foreign currency and forward exchange cover is used, the prices in the indexes exclude the forward exchange cover.

**14** The main pricing methodology used is specification pricing, under which a manageable sample of precisely specified products is selected, in consultation with each reporting business, for repeat pricing. In specifying the products, care is taken to ensure that they are fully defined in terms of all the characteristics which influence their transaction prices. As such, all the relevant technical characteristics need to be described (e.g. make, model, features) along with the unit of sale, type of packaging, conditions of sale (e.g. delivered, payment within 30 days), etc. The goods are also specified by country and market in order to lessen the impact of price variations attributable solely to changes over time in the mix of countries, or markets.

**15** When the quality or specifications of an item being priced change over time, adjustments are made to the reported prices so that the index captures only pure price change. That is, any element of price change attributable to a change in quality is removed. If there is an increase (decrease) in the quality of an item, then the price index is adjusted downwards (upwards) to reflect the 'worth' of the quality change. This technique is known as pricing to constant quality.

**16** Wherever possible, prices from volume selling products being traded with predominant countries, or markets, are obtained to ensure specifications have a good chance of being re-priced over time and index series are representative of overall price movements. Individual product weights and weights between markets and countries are regularly reviewed to keep the indexes up to date.

### INDEX NUMBERS

**17** Index numbers for financial years are simple averages of the relevant quarterly index numbers.

### ANALYSIS OF INDEX CHANGES

**18** Care should be exercised when interpreting quarter-to-quarter movements in the indexes as short-term movements do not necessarily indicate changes in trend.

## EXPLANATORY NOTES *continued*

### ANALYSIS OF INDEX CHANGES *continued*

**19** Movements in indexes from one period to another can be expressed either as changes in 'index points' or as percentage changes. The following example illustrates the method of calculating index points changes and percentage changes between any two periods:

Export price index, All groups index number:	
March quarter 2009	209.8 (see table 7)
less March quarter 2008	146.9 (see table 7)
Change in index points	62.9
Percentage change	$62.9/146.9 \times 100 = 42.8\%$

**20** Tables 2 and 8 provide analyses of the contribution which SITC sections and divisions make to the All groups import price index and export price index, respectively. For example, imports of mineral fuels, lubricants and related materials contributed 12.15 index points to the All groups import price index number of 133.2 for March quarter 2009 and -5.83 index points to the net change of -3.8 index points between December 2008 and March 2009 quarters.

### FURTHER INFORMATION

**21** For further information on price indexes in the ABS refer to the following publications:

*Information Paper: Producer and International Trade Price Indexes; Concepts, Sources and Methods 2006*, cat. no. 6429.0

*Information Paper: An Analytical Framework for Price Indexes in Australia*, cat. no. 6421.0

*Information Paper: Producer Price Index Developments*, cat. no. 6422.0

*Information Paper: Review of the Import Price Index and Export Price Index, Australia*, cat. no. 6424.0

*Information Paper: Price Indexes and The New Tax System*, cat. no. 6425.0

*Information Paper: Changes to the Weights of the Price Indexes for the Output of the General Construction Industry, Australia*, cat. no. 6406.0

### RELATED PUBLICATIONS

**22** Users may also wish to refer to the following related publications, which are available from the ABS website:

*Producer Price Indexes, Australia*, cat. no. 6427.0

*Consumer Price Index, Australia*, cat. no. 6401.0

*Labour Price Index, Australia*, cat. no. 6345.0

*Australian National Accounts, Input-Output Tables*, cat. no. 5209.0

*Balance of Payments and International Investment Position, Australia*, cat. no. 5302.0

**23** Current publications and other products released by the ABS are listed in the *Catalogue of Publications and Products*, cat. no. 1101.0. The Catalogue is available from any ABS office or the ABS website <<http://www.abs.gov.au>>. The ABS also issues a daily Release Advice on the website which details products to be released in the week ahead.

## APPENDIX IMPLEMENTATION OF ANZSIC 2006

---

### INTRODUCTION

This appendix provides users of the international trade price indexes with details on the implementation of the new Australian and New Zealand Standard Industrial Classification (ANZSIC 2006). The international trade price indexes will be released on the new basis from the September quarter 2009 onwards. The changes to the ANZSIC classification and how the indexes are affected by these changes are outlined below. Correspondence tables showing the relationship between the old (ANZSIC 1993) and new (ANZSIC 2006) classifications are available via the 'Downloads' tab of this publication on the ABS website <<http://www.abs.gov.au>>.

### ANZSIC 2006 DEVELOPMENT

In 2002, the ABS and Statistics New Zealand commenced a review to maintain currency and relevance of ANZSIC. Since the release of the original classification in 1993 there had been significant changes in the structure, composition and organisation of industrial and business activities in both Australia and New Zealand. The review found that new materials, technologies and production techniques had been adopted which affected the way industry and businesses operate, as well as the emergence of new industries which needed to be included in the classification. The 2006 edition of the ANZSIC classification (cat. no. 1292.0) was released in February 2006, including correspondence tables which are available free of charge from the ABS website, titled Australian and New Zealand Standard Industrial Classification (ANZSIC), 2006 – Correspondence Tables, 2008 (cat. no. 1292.0.55.005).

### HOW INTERNATIONAL TRADE PRICE INDEXES WILL BE AFFECTED

As a result of the classification changes, some existing series will no longer be available. Some series will continue, but with a name or industry label change only. Some series will continue with a name change and change to the composition of the activities contributing to that index, but these changes are not considered to be material. Some new series will be created with historical data available back to September quarter 2001, using relevant components from the ANZSIC 1993 series. Some of the more significant changes are itemised below. Details of all the changes can be found on the ABS website where correspondences between the old (ANZSIC 1993) and new (ANZSIC 2006) classifications are available. Correspondence tables showing the relationship between the old (ANZSIC 1993) and new (ANZSIC 2006) classifications are available via the 'Downloads' tab of this publication on the ABS website <<http://www.abs.gov.au>>.

The currently published Import Price Index series Mining n.e.c. (ANZSIC 1993 group 142) will be discontinued from the September quarter 2009 onwards as it will no longer be available at the ANZSIC group level. Mining data will continue to be available at the ANZSIC subdivision level under ANZSIC 2006, i.e. subdivision 06 Coal mining, and subdivision 08 Metal ore mining, and at the Division level i.e. Division B Mining.

The currently published Import Price Index series Textiles (ANZSIC 1993 groups 221-222) and Clothing, footwear and leather (ANZSIC 1993 groups 223-226) will be discontinued as these series will no longer be available at the group level. These series will be combined and made available at the subdivision level under ANZSIC 2006, i.e. subdivision 13 Textiles, leather, clothing and footwear manufacturing.

The currently published Import Price Index and Export Price Index series Food, beverages and tobacco (ANZSIC 1993 subdivision 21) will be discontinued. Under ANZSIC 2006 there will be two new series: Food product manufacturing (new subdivision 11); and Beverage and tobacco product manufacturing (new subdivision 12).

The currently published Import Price Index series Printing, publishing and recorded media (ANZSIC 1993 groups 241-243) will be discontinued. Under ANZSIC 2006 this series will no longer be available as part of ANZSIC 2006 Manufacturing (division C).

## APPENDIX IMPLEMENTATION OF ANZSIC 2006 *continued*

---

### FURTHER INFORMATION

An Information Paper will be released towards the middle of 2009 which will include key information on the new index structures, their weighting patterns and further details of the implementation. The areas impacted by the ANZSIC 2006 changes will be detailed, and the proposed table format under an ANZSIC 2006 classification will be provided, as well as time series identifiers for the new and changed series.

### WHO TO CONTACT REGARDING THESE ANZSIC 2006 CHANGES

Queries regarding the impact on the international trade price indexes of the implementation of ANZSIC 2006 can be directed to Christine McLaughlin, Director, Producer Price Indexes Section, by e-mail to [christine.mclaughlin@abs.gov.au](mailto:christine.mclaughlin@abs.gov.au), facsimile on (02) 6252 7060, mail to Locked Bag 10, Belconnen, ACT 2616, or (02) 6252 6252.







## FOR MORE INFORMATION . . .

*INTERNET*      **www.abs.gov.au** the ABS website is the best place for data from our publications and information about the ABS.

### INFORMATION AND REFERRAL SERVICE

Our consultants can help you access the full range of information published by the ABS that is available free of charge from our website. Information tailored to your needs can also be requested as a 'user pays' service. Specialists are on hand to help you with analytical or methodological advice.

*PHONE*                      1300 135 070

*EMAIL*                      [client.services@abs.gov.au](mailto:client.services@abs.gov.au)

*FAX*                              1300 135 211

*POST*                            Client Services, ABS, GPO Box 796, Sydney NSW 2001

## FREE ACCESS TO STATISTICS

All statistics on the ABS website can be downloaded free of charge.

*WEB ADDRESS*      [www.abs.gov.au](http://www.abs.gov.au)